

- Lead-Free Brass Design †
- Reliable Liquid-Filled Thermostat with 10 year warranty
- Integral Strainer Checkstops on Inlets
- Adjustable Set Point within Temperature Range
- Accurate Temperature Control
- Positive Shutoff of Hot Supply When Cold Supply is Lost
- Easy Installation and Serviceability
- Dirt and Lime Resistant
- Factory Assembled and Tested
- Cabinet Features:
  - 18 Gauge Body & Door
  - Inlet/Outlet Knock-Out Holes for Mounting Flexibility
  - Left-Hand Hinge
  - Stainless Steel or Baked White Enamel Finishes
  - Cylinder Lock
  - Surface-Mounted or Recessed Style with Flange

### Valve Specifications

#### Maximum Operating Pressure

125 PSI (860 kPa)

#### Maximum Inlet Temperature

200° F (93° C)

#### Temperature Range

**Std.** 85° F (29° C) to 135° F (57° C)

**Low** 50° F (10° C) to 100° F (38° C)

**High** 100° F (38° C) to 150° F (66° C)

#### Set Point

110° F (43° C)

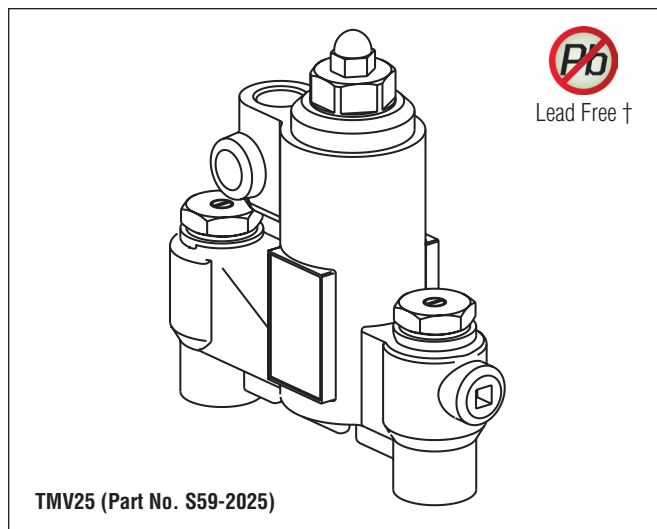
80° F (27° C)

130° F (54° C)



† Wetted surface contains less than .25% lead

☒ **Standard product selections contained within this document are third party CERTIFIED to NSF/ANSI 372 meeting the Lead-Free content requirement. Any product configured with custom options will be COMPLIANT with NSF/ANSI 372 meeting the Lead-Free content requirement.**



#### Flow Capacities – GPM (L/Min)

Model	Min* Flow	Pressure Drop – PSI (Bar)						
		5 (.5)	10 (1.0)	15 (1.5)	20 (2.0)	30 (2.5)	45 (3.0)	60 (4.0)
S59-2025	2.0 (8)	5.5 (30.0)	9.0 (47.0)	13.0 (60.0)	16.0 (73.0)	20.0 (84.0)	25.0 (94.0)	29.0 (112.0)

\*Recirculation system only (See diagram on Page 2). When properly installed near the hot water source with a **continuously operating** recirculation pump, the valve will maintain set temperature with a .5 GPM (2.0 L/Min) draw from the plumbing system.

### Code Compliance and Certifications

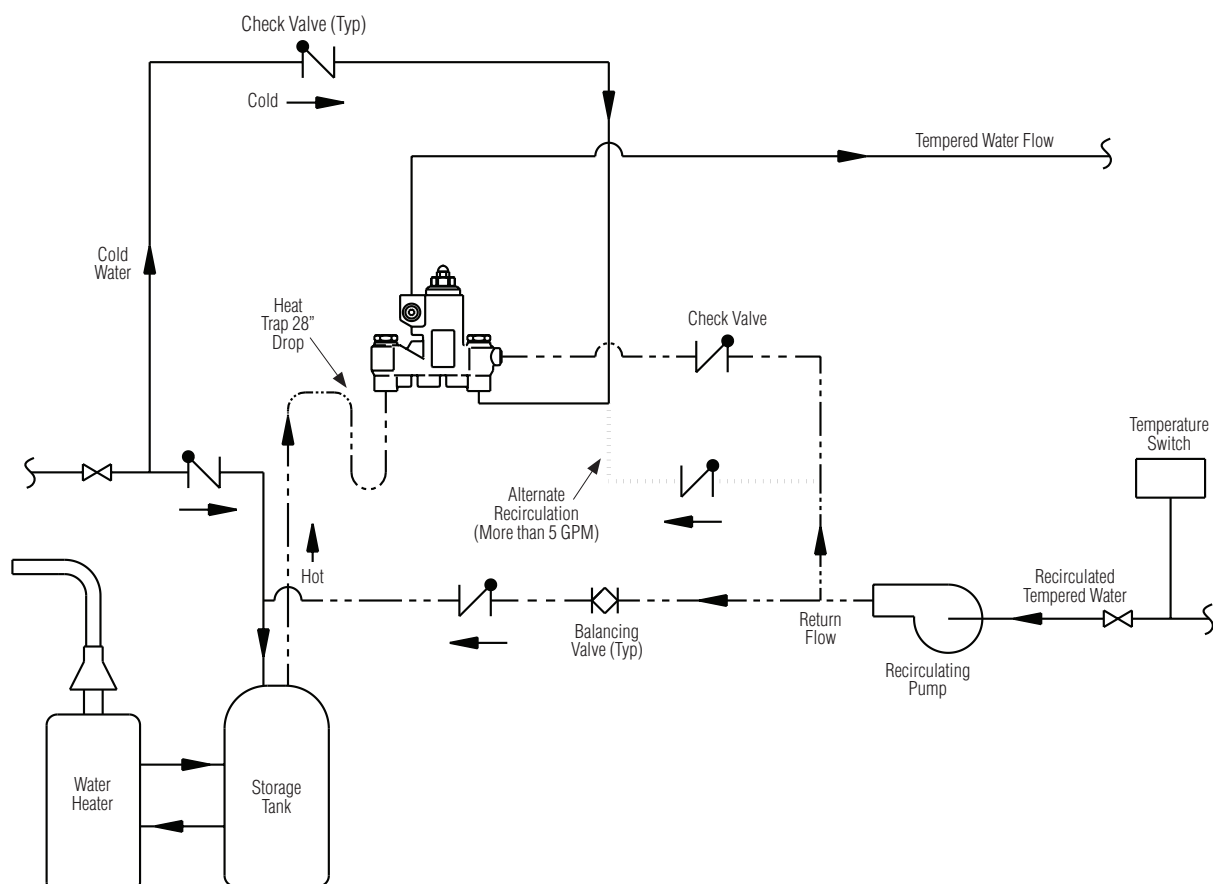
ASSE 1017 & cUPC certified. Complies with California Lead Plumbing Law.

#### Optional Selections

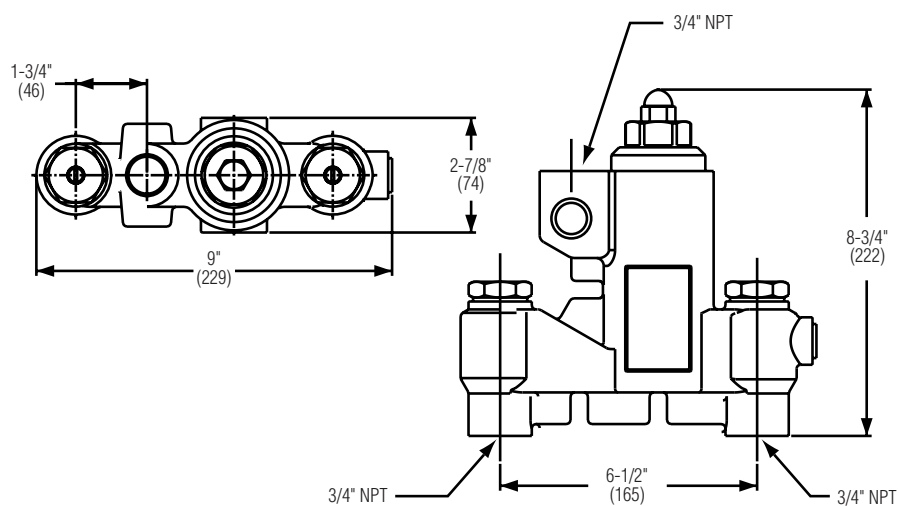
<b>Finish</b>	
<input type="checkbox"/> C	Chrome Plated
<b>Thermostat</b>	
<input type="checkbox"/> L	Low Range Thermostat
<input type="checkbox"/> H	High Range Thermostat
<b>Thermometer</b>	
<input type="checkbox"/> T	Dial Thermometer
<b>Bracket</b>	
<input type="checkbox"/> B	Wall Mounting Bracket
<b>Piped Assembly</b>	
<input type="checkbox"/> P	Piped Assembly with Inlet and Outlet Shutoff
<input type="checkbox"/> N	Piped Assembly with Outlet Shutoff
<b>Cabinets</b>	
<input type="checkbox"/> SS	Surface Mount Stainless Steel
<input type="checkbox"/> RS	Recessed Stainless Steel
<input type="checkbox"/> SE	Surface Mount White Enamel
<input type="checkbox"/> RE	Recessed White Enamel
<input type="checkbox"/> W	Plexi-glass Window in Door

## Recirculation Diagram

(mm)



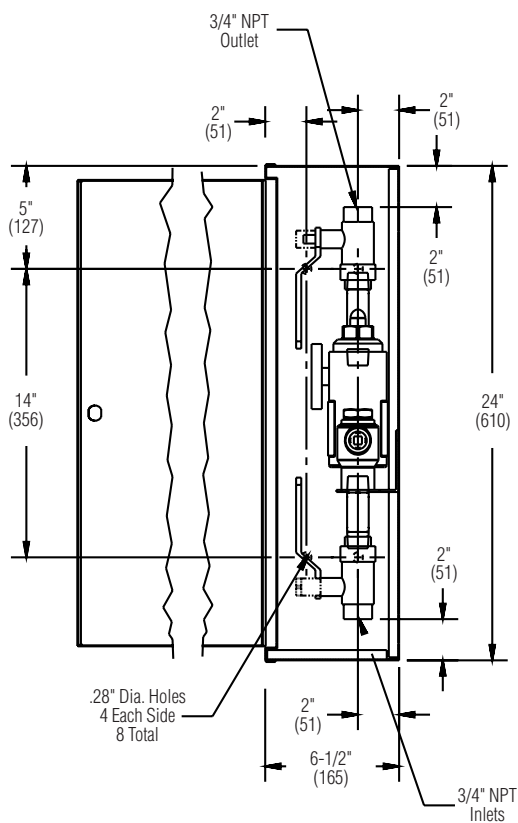
## Dimensions



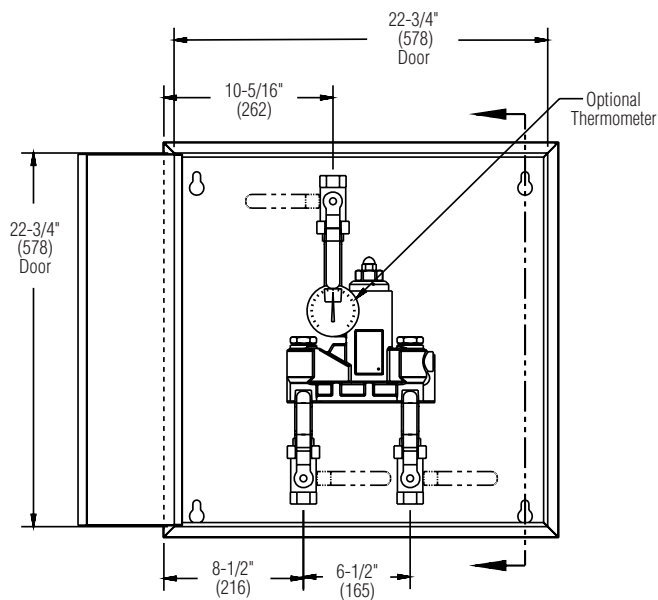
### Dimensions — TMV25 Surface-Mounted Cabinet

(mm)

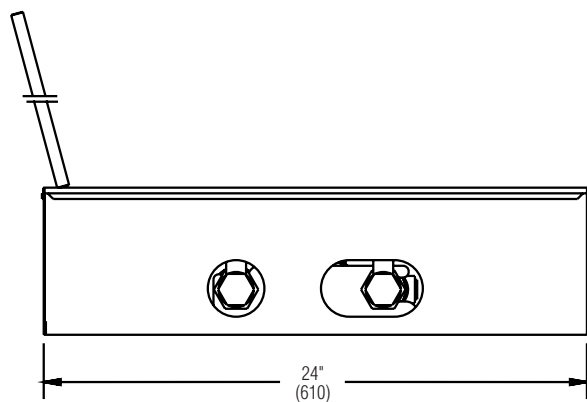
**Side View**



**Front View**



**Bottom View**



**Back View**

