

- Reliable liquid-filled thermostat
- Integral strainer checkstops on inlets
- Adjustable set point within temperature range
- Accurate temperature control
- Positive shutoff of hot supply when cold supply is lost
- Easy installation and serviceability
- Dirt and lime resistant
- Factory assembled and tested
- Universal mounting capability
- Cabinet Features
 - 18 gauge body & door
 - Left hand hinge
 - Cylinder Lock
 - Inlet/outlet knock out holes for mounting flexibility
 - Stainless steel or baked white enamel finishes
 - Surface mounted or recessed style with flange

Valve Specifications

Maximum Operating Pressure

125 PSI (860 kPa)

Maximum Inlet Temperature

200° F (93° C)

Temperature Range

Std. 85° F (29° C) to 135° F (57° C)
Low 50° F (10° C) to 100° F (38° C)
High 100° F (38° C) to 150° F (66° C)

Set Point

110° F (43° C)
 80° F (27° C)
 130° F (54° C)

Flow Capacities – GPM (L/Min)

Model	Min* Flow	Pressure Drop – PSI (Bar)						
		5 (.5)	10 (1.0)	15 (1.5)	20 (2.0)	30 (2.5)	45 (3.0)	60 (4.0)
S59-2045	5.0 (18.9)	12.0 (60.0)	17.0 (91.0)	21.0 (115.0)	25.0 (135.0)	31.0 (153.0)	37.0 (170.0)	42.0 (200.0)
S59-2080	8.0 (30.3)	24.0 (116.0)	34.0 (166.0)	44.0 (206.0)	48.0 (234.0)	60.0 (267.0)	74.0 (296.0)	85.0 (343.0)

*Recirculation system only (See diagram on Page 2). When properly installed near the hot water source with a **continuously operating** recirculation pump, the valve will maintain set temperature with a .5 GPM (2.0 L/Min) draw from the plumbing system.

Code Compliance and Certifications

ASSE 1017 & cUPC certified.

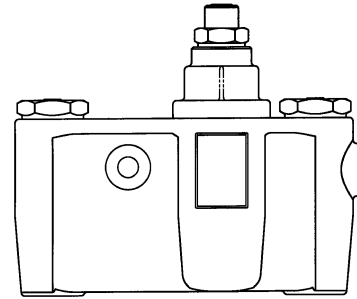


Certified to
NSF/ANSI 372



Standard product selections contained within this document are third party CERTIFIED to NSF/ANSI 372 meeting the Lead-Free content requirement. Any product configured with custom options will be COMPLIANT with NSF/ANSI 372 meeting the Lead-Free content requirement.

Engineer's Approval _____



Models (Must select one)

- | Model | Description |
|--|---------------------------------|
| <input type="checkbox"/> S59-2045 | TMV45-Thermostatic Mixing Valve |
| <input type="checkbox"/> S59-2080 | TMV80-Thermostatic Mixing Valve |

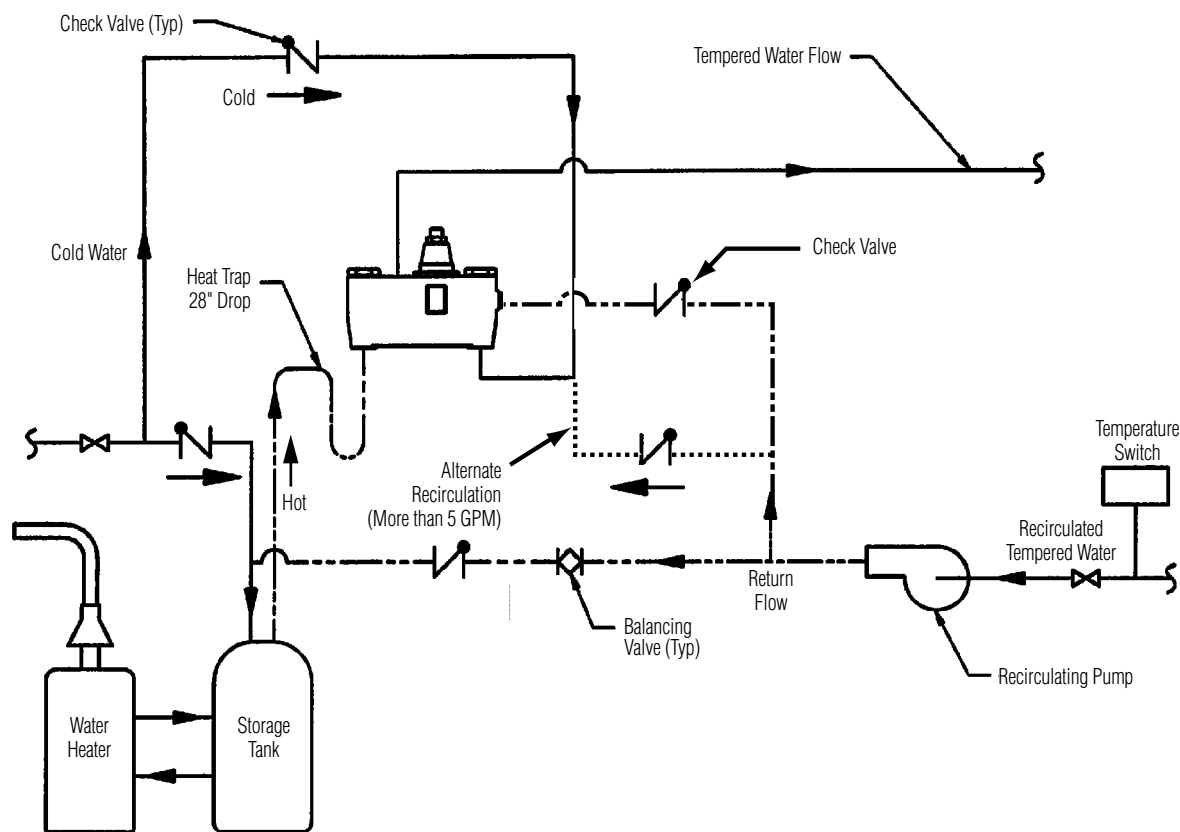
Optional Selections

- | | |
|------------------------------------|--|
| Finish | |
| <input type="checkbox"/> C | Chrome Plated |
| Thermostat | |
| <input type="checkbox"/> L | Low Range Thermostat |
| <input type="checkbox"/> H | High Range Thermostat |
| Thermometer | |
| <input type="checkbox"/> T | Dial Thermometer |
| Bracket | |
| <input type="checkbox"/> B | Wall Mounting Bracket |
| Piped Assembly | |
| <input type="checkbox"/> P | Piped Assembly with Inlet and Outlet Shutoff |
| Cabinets | |
| <input type="checkbox"/> N | Piping Assembly with Outlet Shutoff |
| <input type="checkbox"/> SS | Surface Mount Stainless Steel |
| <input type="checkbox"/> RS | Recessed Stainless Steel |
| <input type="checkbox"/> SE | Surface Mount White Enamel |
| <input type="checkbox"/> RE | Recessed White Enamel |
| <input type="checkbox"/> W | Plexi-glass Window in Door |

Sample Specification

Thermostatic water mixing valve shall consist of liquid-filled motor and a piston control mechanism with positive shutoff of hot water when cold water supply is lost. All flow is shut off in the event of thermostat failure. Construction shall be bronze body and cap with replaceable corrosion resistant components, including stainless steel piston and liner. Valve shall come equipped with integral checkstops and removable strainers.

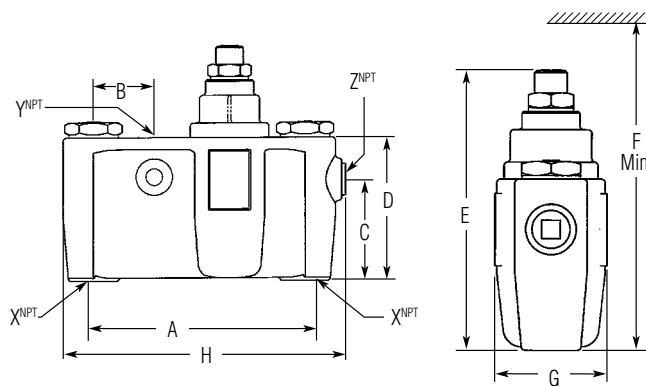
Recirculation Diagram



Dimensions – Inches (mm)

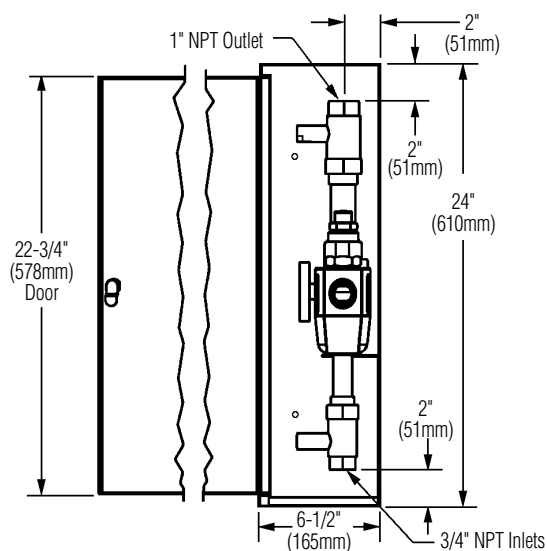
Model	A	B	C	D	E
S59-2045	7 (178)	2 (51)	3-1/4 (84)	4-3/4 (119)	8 (203)
S59-2080	8-3/4 (224)	2-1/2 (64)	3-1/2 (89)	5-1/4 (135)	12-1/4 (312)

Model	F	G	H	X ^{NPT}	Y ^{NPT}	Z ^{NPT}
S59-2045	14 (356)	3-1/8 (79)	9-1/4 (234)	3/4	1	3/4
S59-2080	19 (483)	3-5/8 (91)	11-3/8 (290)	1	1-1/4	3/4

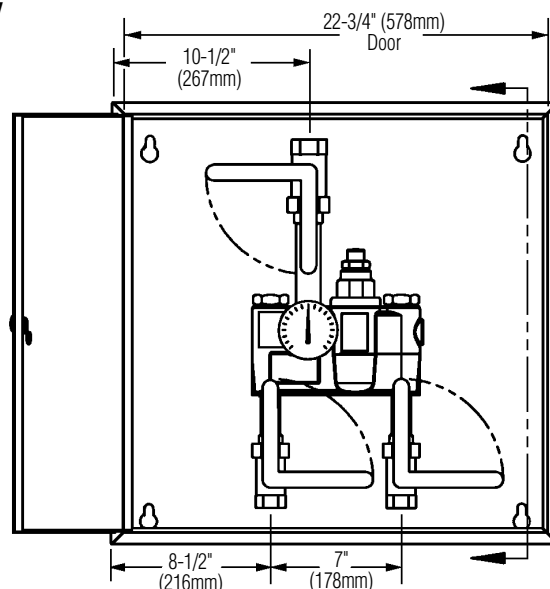


Dimensions — TMV45 Surface Mounted

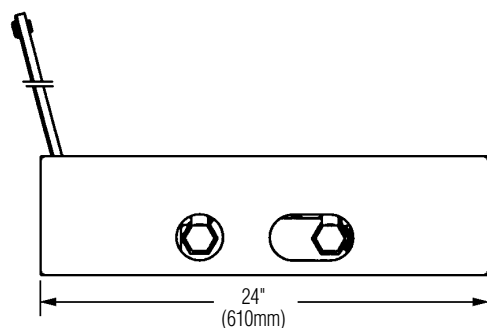
Side View



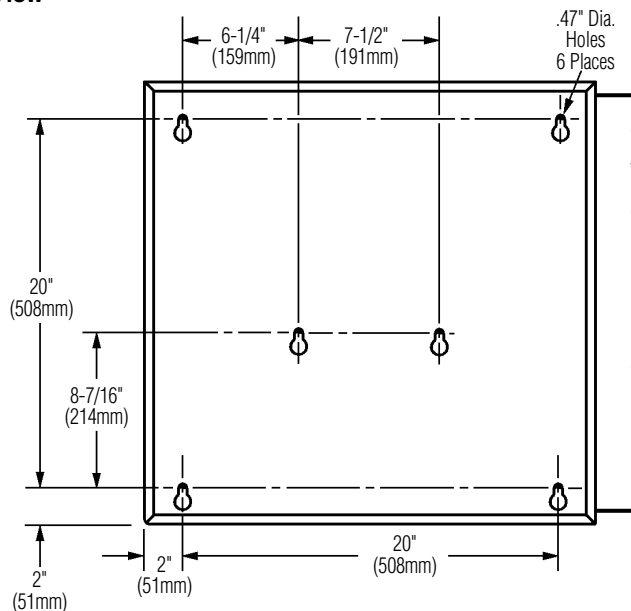
Front View



Bottom View

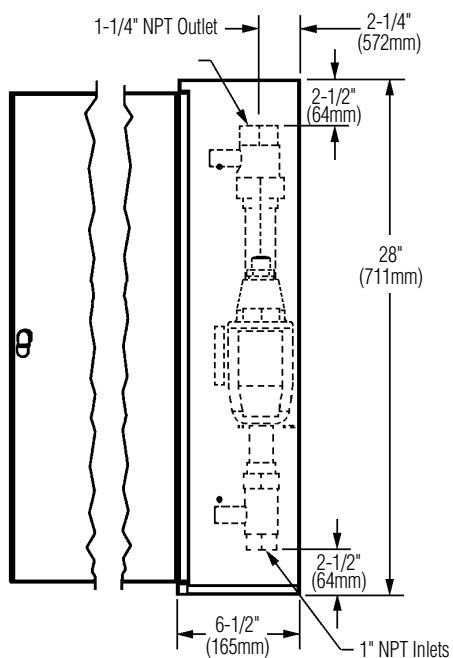


Back View

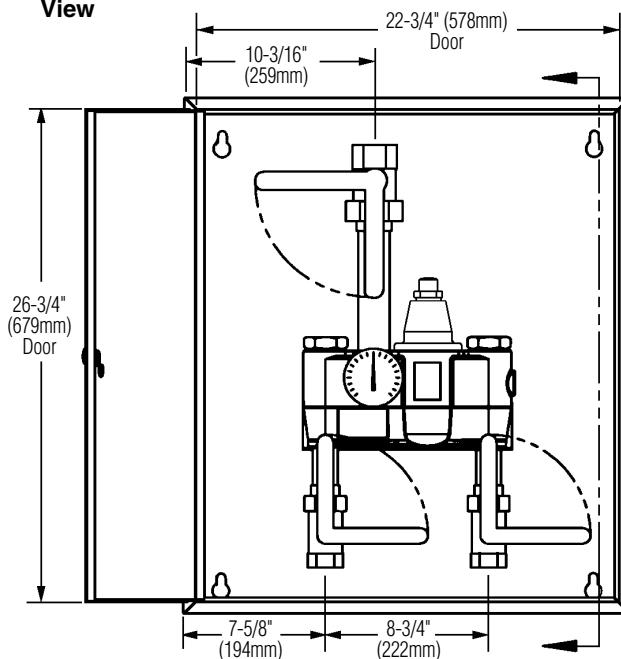


Dimensions — TMV80 Surface Mounted

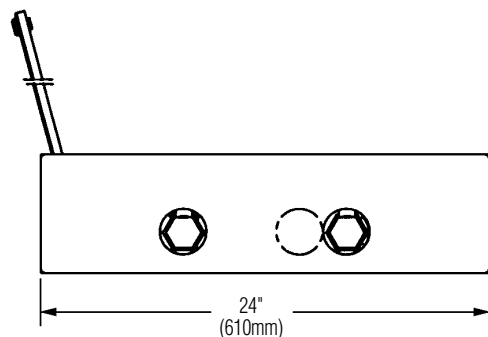
Side View



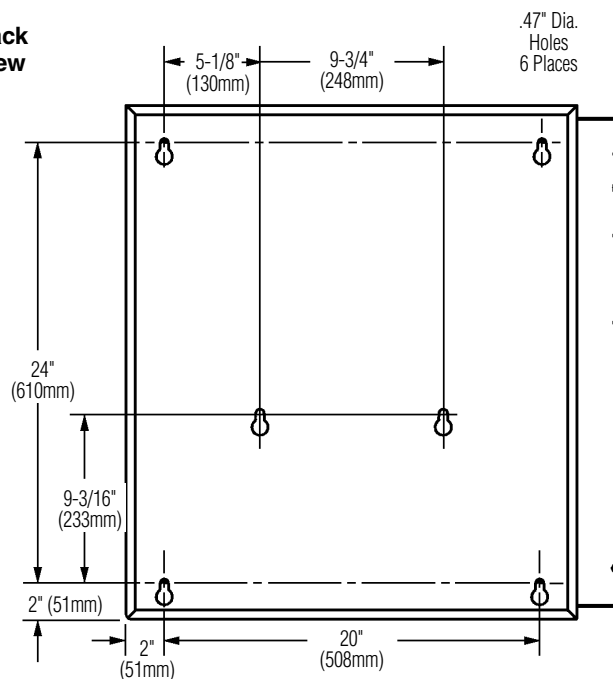
Front View



Bottom View

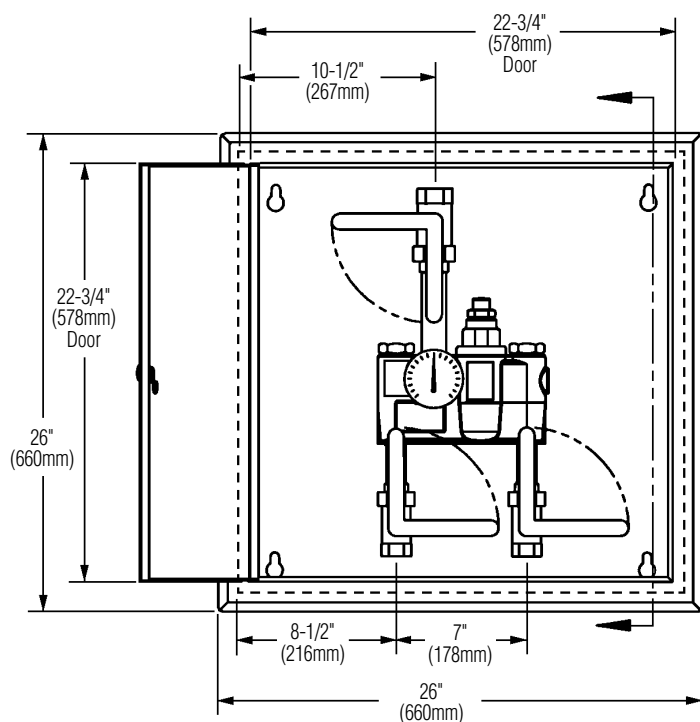


Back View

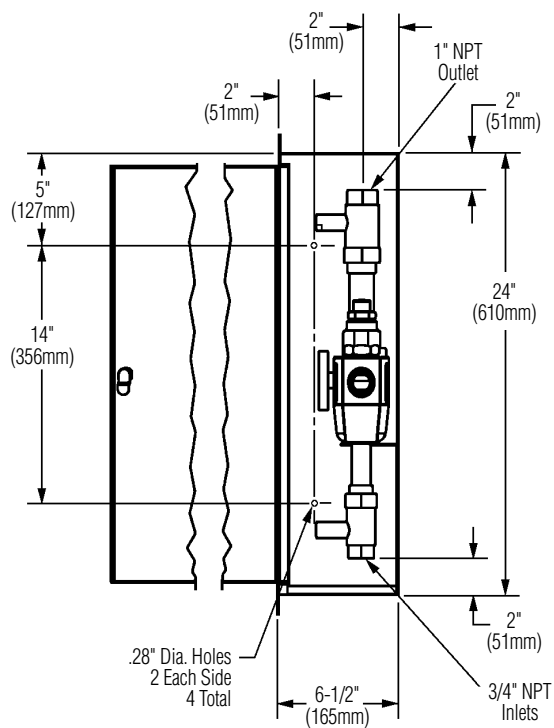


Dimensions — TMV45 Recessed

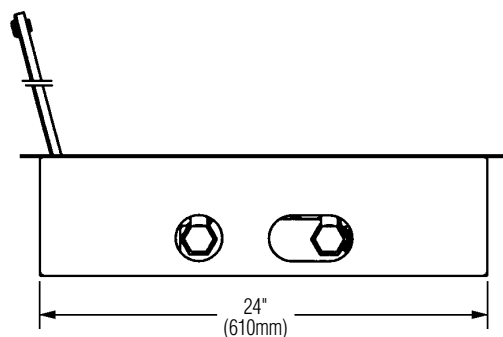
Front View



Side View

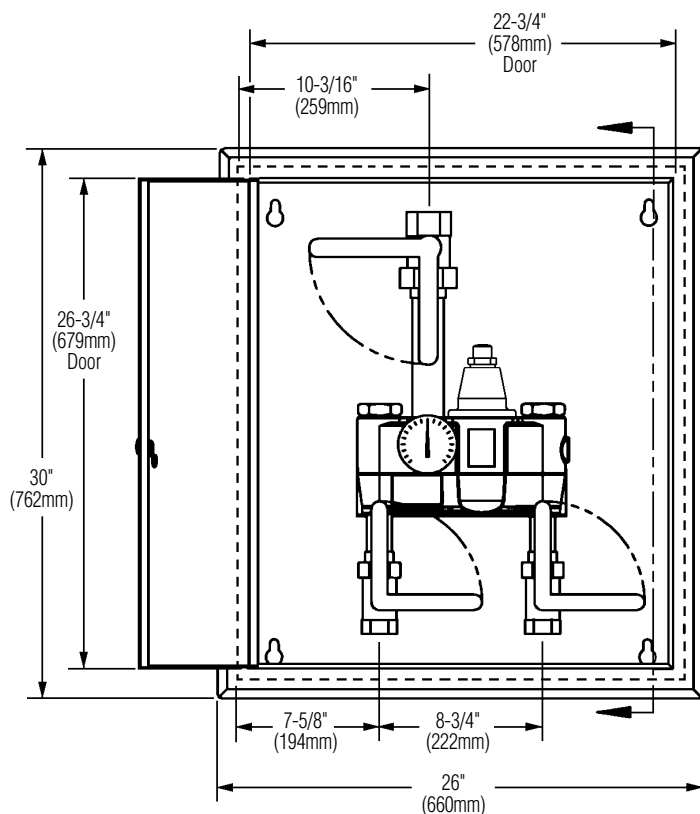


Bottom View

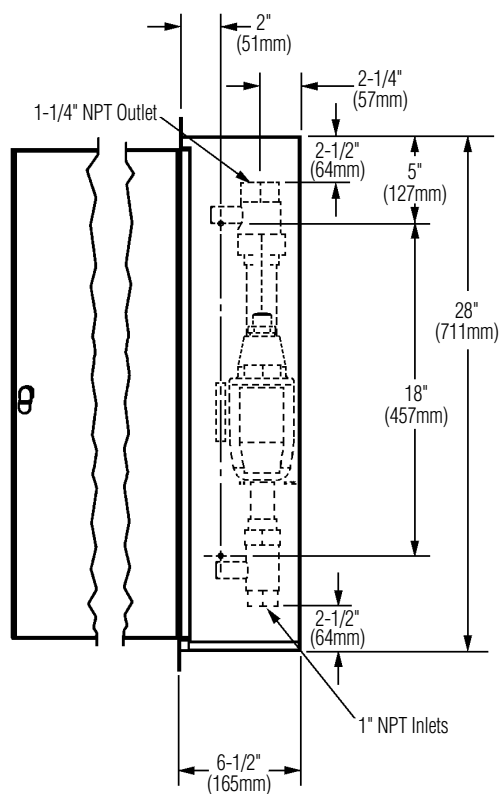


Dimensions — TMV80 Recessed

Front View



Side View



Bottom View

